

CM 371

Gru idraulica a montaggio rapido
Hydraulic crane with quick assembling
Grue hydraulique à montage rapide
Hydraulischer Schnellmontagekran
Grúa hidráulica de montaje rápido



EN 14439 C25

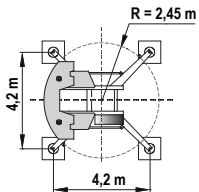
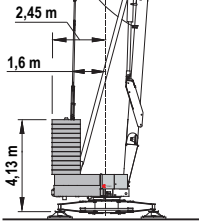
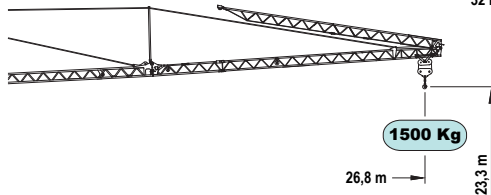
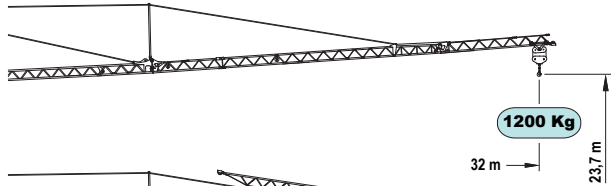
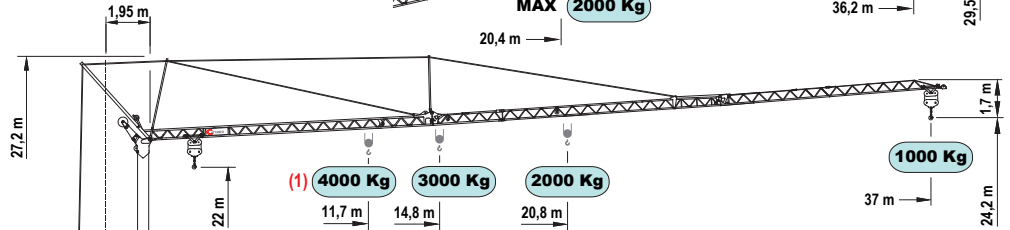
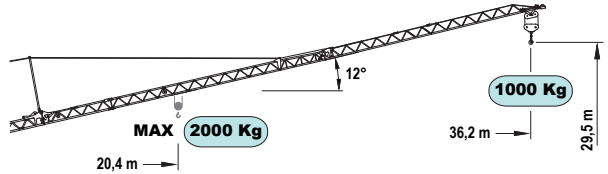
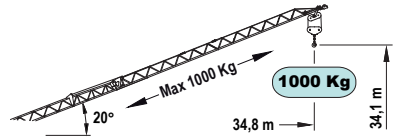
DIN 15018-H1/B3

PROGETTO e COSTRUZIONE / DESIGN and CONSTRUCTION:
LUIGI CATTANEO S.p.A

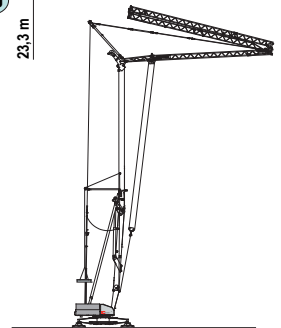
CM 371



Nessun componente elettrico sul braccio e sulle parti alte della gru
No electrical component on the jib and the top of the crane



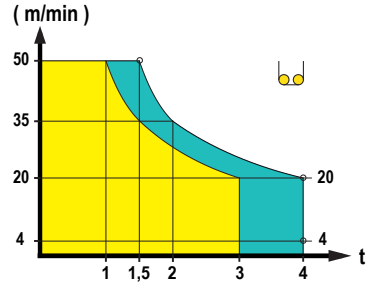
Max. kg 3000 - 4000



Curve di carico	kg	4000	3000	2500	2000	1900	1800	1700	1600	1500	1400	1300	1200	1100	1000
Load diagrams	m	11.7	14.8	17.3	20.8	21.7	23.7	23.9	25.1	26.4	28.0	29.8	31.8	34.2	37.0
Courbes de charge	m	11.8	14.9	17.4	20.9	21.9	22.9	24.0	25.2	26.6	28.2	29.9	32.0		
Lastkurven	m	11.9	15.0	17.5	21.1	22.0	23.0	24.1	25.4	26.8					
Curvas de cargas	m				20.4	21.3	22.3	23.4	24.6	26.0	27.5	29.2	31.2	33.5	36.2

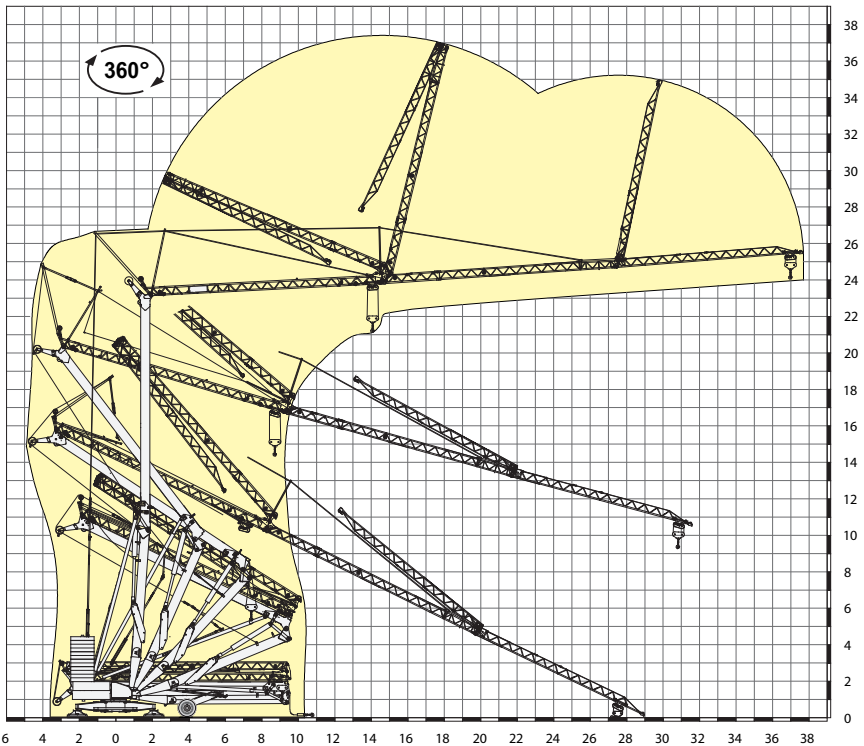
Prestazioni - Performances - Prestations - Leistungen - Prestaciones

	 kW	 400V - 50Hz				16 kW (1) 21 kW		
	inverter	kW/g/min		1°	2°	3°	4°	
				m/min	4	20	35	50
				kg	3000	3000	1500	1000
	inverter	3/1400		kg	4000	4000	2000	1500
				m/min	10 - 25 - 50			
	inverter	3,7/900		g/min	0,2 - 0,5 - 0,9			

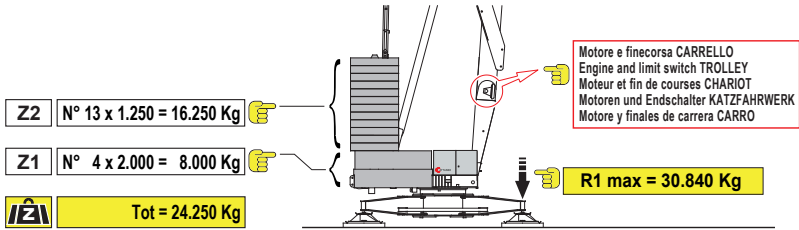


(1) Optional

Montaggio - Erection - Montage - Montage - Montaje

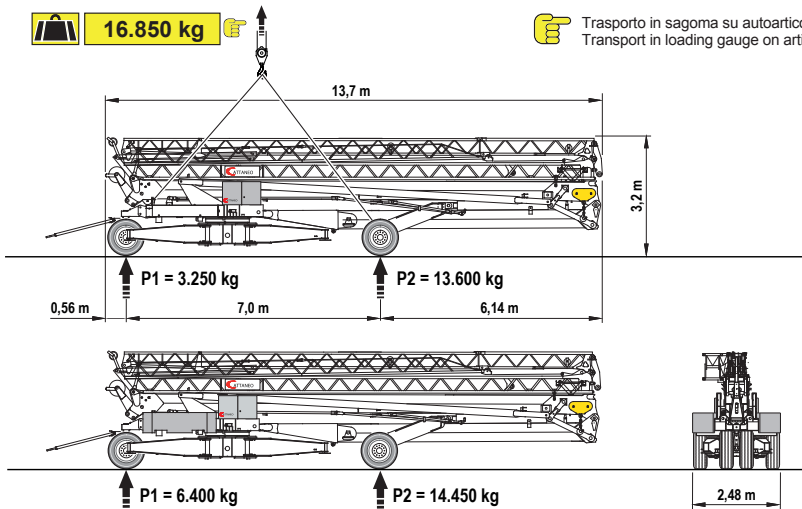


Contrappeso in lastre di cemento armato - Ferro-concrete ballast slabs Contrepoids en plaques de béton armé - Gegengewicht aus Betonplatten - Lastre en hormigón armado

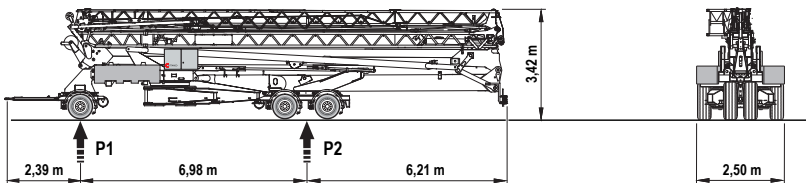


Trasporto - Transport - Transport - Transport - Transporte

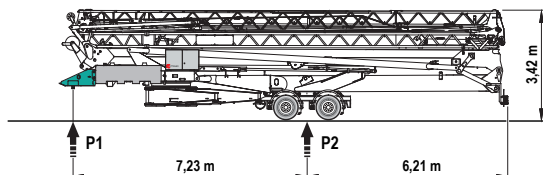
16.850 kg Trasporto in sagoma su autoarticolato
Transport in loading gauge on articulated lorry



R120



S020



Otto	km/h	P1	P2	kg
R120	80	7.390	16.100	kg
S020	80	6.390	16.100	kg

Dir. 2007/46/CE